

Type		V_{DRM} V_{RRM}	I_{TAV} $T_K = 55^\circ C$	I_{TSM} 10 ms 1/2 sine $V_R \leq 60\% V_{RRM}$	I^2t A ² s	t_q @ 200 V/ μ s	Typ. Reverse Recovery Charge			V_{TO}	r_T @ T_{JM}	T_{JM}	R_{thJK}		Fig. No.
Part No. New	Old Part No.	V	A	A	A ² s	μ s	Q_{ra} μ C	@ I_{TM} A	@-di/dt A/ μ s	V	m Ω	°C	180° Sine K/W	120° Rect. K/W	
K2960TC450	N/A	4500	2960	32500	5.28×10^6	800-1600	11000	4000	10	1.229	0.212	125	0.0085	0.0092	W14
K2960TC480	N/A	4800	2960	32500	5.28×10^6	800-1600	11000	4000	10	1.229	0.212	125	0.0085	0.0092	W14
K2960TC520	N/A	5200	2960	32500	5.28×10^6	800-1600	11000	4000	10	1.229	0.212	125	0.0085	0.0092	W14
K2960TD450	N/A	4500	2960	32500	5.28×10^6	800-1600	11000	4000	10	1.229	0.212	125	0.0085	0.0092	W51
K2960TD480	N/A	4800	2960	32500	5.28×10^6	800-1600	11000	4000	10	1.229	0.212	125	0.0085	0.0092	W51
K2960TD520	N/A	5200	2960	32500	5.28×10^6	800-1600	11000	4000	10	1.229	0.212	125	0.0085	0.0092	W51
K2973FC600	N/A	6000	2973	35400	6.27×10^6	1100-1500	6200	4000	10	1.581	0.207	115	0.0065	0.0069	W15
K2973FC650	N/A	6500	2973	35400	6.27×10^6	1100-1500	6200	4000	10	1.581	0.207	115	0.0065	0.0069	W15
K2973FD600	N/A	6000	2973	35400	6.27×10^6	1100-1500	6200	4000	10	1.581	0.207	115	0.0065	0.0069	W48
K2973FD650	N/A	6500	2973	35400	6.27×10^6	1100-1500	6200	4000	10	1.581	0.207	115	0.0065	0.0069	W48
K3207EC450	KX142EC450	4500	3207	32500	5.28×10^6	800-1600	11000	4000	10	1.229	0.212	125	0.0075	0.0080	W55
K3207EC480	KX142EC480	4800	3207	32500	5.28×10^6	800-1600	11000	4000	10	1.229	0.212	125	0.0075	0.0080	W55
K3207EC520	KX142EC520	5200	3207	32500	5.28×10^6	800-1600	11000	4000	10	1.229	0.212	125	0.0075	0.0080	W55
K3362TC360	N/A	3600	3362	39500	7.80×10^6	1000-2000	7400	4000	10	1.052	0.168	125	0.0085	0.0092	W14
K3362TC420	N/A	4200	3362	39500	7.80×10^6	1000-2000	7400	4000	10	1.052	0.168	125	0.0085	0.0092	W14
K3362TD360	N/A	3600	3362	39500	7.80×10^6	1000-2000	7400	4000	10	1.052	0.168	125	0.0085	0.0092	W51
K3362TD420	N/A	4200	3362	39500	7.80×10^6	1000-2000	7400	4000	10	1.052	0.168	125	0.0085	0.0092	W51
K3503FC450	KX094FC450	4500	3503	43200	9.33×10^6	900-1800	5500	4000	10	1.375	0.196	125	0.0065	0.0070	W15
K3503FC480	KX094FC480	4800	3503	43200	9.33×10^6	900-1800	5500	4000	10	1.375	0.196	125	0.0065	0.0070	W15
K3503FC520	KX094FC520	5200	3503	43200	9.33×10^6	900-1800	5500	4000	10	1.375	0.196	125	0.0065	0.0070	W15
K3503FD450	KX094FD450	4500	3503	43200	9.33×10^6	900-1800	5500	4000	10	1.375	0.196	125	0.0065	0.0070	W48
K3503FD480	KX094FD480	4800	3503	43200	9.33×10^6	900-1800	5500	4000	10	1.375	0.196	125	0.0065	0.0070	W48
K3503FD520	KX094FD520	5200	3503	43200	9.33×10^6	900-1800	5500	4000	10	1.375	0.196	125	0.0065	0.0070	W48
KX101FC360	N/A	3600										125	0.0065	0.0070	W15
KX101FC420	N/A	4200										125	0.0065	0.0070	W15
KX101FD360	N/A	3600										125	TBA	TBA	W48
KX101FD420	N/A	4200										125	TBA	TBA	W48
KX163VC520	N/A	5200										125	0.0130	0.0150	W12
KX163VF520	N/A	5200										125	0.0130	0.0150	W62
KX191LC520	N/A	5200										125	0.0320	0.0390	W10
KX191LG520	N/A	5200										125	0.0320	0.0390	W56
KX193NC520	N/A	5200										125	0.0240	0.0290	W11
KX193NG520	N/A	5200										125	0.0240	0.0290	W57

Products under development



Outlines on pages
O-01...O-24



W10 Weight 340 g



W11 Weight 510 g



W12 Weight 1000 g



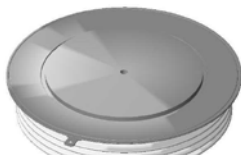
W13 Weight 1700 g



W14 Weight 1300 g



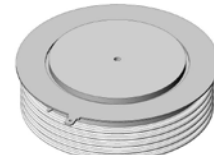
W15 Weight 2800 g



W46 Weight 1200 g



W48 Weight 2000 g



W51 Weight 1700 g



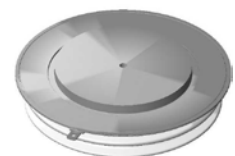
W55 Weight 1800 g



W56 Weight 271 g



W57 Weight 326 g



W62 Weight 1000 g