

Type		$V_{DRM}$ $V_{RRM}$	$I_{TAV}$ $T_K = 55^\circ C$	$I_{TSM}$ 10 ms 1/2 sine $V_R \leq 60\% V_{RRM}$	$I^2t$ A <sup>2</sup> s	$t_q$ @ 200 V/ $\mu$ s	Typ. Reverse Recovery Charge			$V_{TO}$	$r_T$ @ $T_{JM}$	$T_{JM}$	$R_{thJK}$		Fig. No.
Part No. New	Old Part No.	V	A	A	A <sup>2</sup> s	$\mu$ s	$Q_{ra}$ $\mu$ C	@ $I_{TM}$ A	@-di/dt A/ $\mu$ s	V	m $\Omega$	°C	180° Sine K/W	120° Rect. K/W	
K2960TC450	N/A	4500	2960	32500	$5.28 \times 10^6$	800-1600	11000	4000	10	1.229	0.212	125	0.0085	0.0092	W14
K2960TC480	N/A	4800	2960	32500	$5.28 \times 10^6$	800-1600	11000	4000	10	1.229	0.212	125	0.0085	0.0092	W14
K2960TC520	N/A	5200	2960	32500	$5.28 \times 10^6$	800-1600	11000	4000	10	1.229	0.212	125	0.0085	0.0092	W14
K2960TD450	N/A	4500	2960	32500	$5.28 \times 10^6$	800-1600	11000	4000	10	1.229	0.212	125	0.0085	0.0092	W51
K2960TD480	N/A	4800	2960	32500	$5.28 \times 10^6$	800-1600	11000	4000	10	1.229	0.212	125	0.0085	0.0092	W51
K2960TD520	N/A	5200	2960	32500	$5.28 \times 10^6$	800-1600	11000	4000	10	1.229	0.212	125	0.0085	0.0092	W51
K2973FC600	N/A	6000	2973	35400	$6.27 \times 10^6$	1100-1500	6200	4000	10	1.581	0.207	115	0.0065	0.0069	W15
K2973FC650	N/A	6500	2973	35400	$6.27 \times 10^6$	1100-1500	6200	4000	10	1.581	0.207	115	0.0065	0.0069	W15
K2973FD600	N/A	6000	2973	35400	$6.27 \times 10^6$	1100-1500	6200	4000	10	1.581	0.207	115	0.0065	0.0069	W48
K2973FD650	N/A	6500	2973	35400	$6.27 \times 10^6$	1100-1500	6200	4000	10	1.581	0.207	115	0.0065	0.0069	W48
K3207EC450	KX142EC450	4500	3207	32500	$5.28 \times 10^6$	800-1600	11000	4000	10	1.229	0.212	125	0.0075	0.0080	W55
K3207EC480	KX142EC480	4800	3207	32500	$5.28 \times 10^6$	800-1600	11000	4000	10	1.229	0.212	125	0.0075	0.0080	W55
K3207EC520	KX142EC520	5200	3207	32500	$5.28 \times 10^6$	800-1600	11000	4000	10	1.229	0.212	125	0.0075	0.0080	W55
K3362TC360	N/A	3600	3362	39500	$7.80 \times 10^6$	1000-2000	7400	4000	10	1.052	0.168	125	0.0085	0.0092	W14
K3362TC420	N/A	4200	3362	39500	$7.80 \times 10^6$	1000-2000	7400	4000	10	1.052	0.168	125	0.0085	0.0092	W14
K3362TD360	N/A	3600	3362	39500	$7.80 \times 10^6$	1000-2000	7400	4000	10	1.052	0.168	125	0.0085	0.0092	W51
K3362TD420	N/A	4200	3362	39500	$7.80 \times 10^6$	1000-2000	7400	4000	10	1.052	0.168	125	0.0085	0.0092	W51
K3503FC450	KX094FC450	4500	3503	43200	$9.33 \times 10^6$	900-1800	5500	4000	10	1.375	0.196	125	0.0065	0.0070	W15
K3503FC480	KX094FC480	4800	3503	43200	$9.33 \times 10^6$	900-1800	5500	4000	10	1.375	0.196	125	0.0065	0.0070	W15
K3503FC520	KX094FC520	5200	3503	43200	$9.33 \times 10^6$	900-1800	5500	4000	10	1.375	0.196	125	0.0065	0.0070	W15
K3503FD450	KX094FD450	4500	3503	43200	$9.33 \times 10^6$	900-1800	5500	4000	10	1.375	0.196	125	0.0065	0.0070	W48
K3503FD480	KX094FD480	4800	3503	43200	$9.33 \times 10^6$	900-1800	5500	4000	10	1.375	0.196	125	0.0065	0.0070	W48
K3503FD520	KX094FD520	5200	3503	43200	$9.33 \times 10^6$	900-1800	5500	4000	10	1.375	0.196	125	0.0065	0.0070	W48
KX101FC360	N/A	3600										125	0.0065	0.0070	W15
KX101FC420	N/A	4200										125	0.0065	0.0070	W15
KX101FD360	N/A	3600										125	TBA	TBA	W48
KX101FD420	N/A	4200										125	TBA	TBA	W48
KX163VC520	N/A	5200										125	0.0130	0.0150	W12
KX163VF520	N/A	5200										125	0.0130	0.0150	W62
KX191LC520	N/A	5200										125	0.0320	0.0390	W10
KX191LG520	N/A	5200										125	0.0320	0.0390	W56
KX193NC520	N/A	5200										125	0.0240	0.0290	W11
KX193NG520	N/A	5200										125	0.0240	0.0290	W57

Products under development



Outlines on pages  
O-01...O-24



W10 Weight 340 g



W11 Weight 510 g



W12 Weight 1000 g



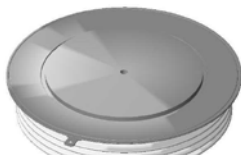
W13 Weight 1700 g



W14 Weight 1300 g



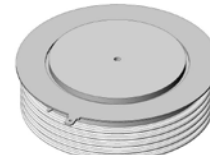
W15 Weight 2800 g



W46 Weight 1200 g



W48 Weight 2000 g



W51 Weight 1700 g



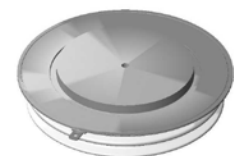
W55 Weight 1800 g



W56 Weight 271 g



W57 Weight 326 g



W62 Weight 1000 g