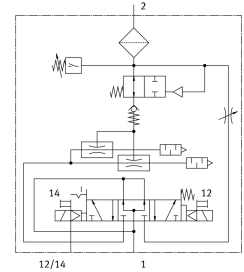
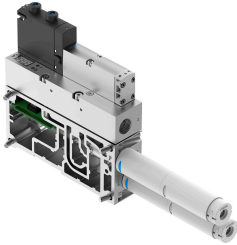


Vacuum generator VABF-S4-2-V2B1-G38-CB-VH-30-AP

Part number: 8067145

FESTO



Data sheet

| Feature | Value |
|-------------------------------|-----------------------------------------------------------------------------------------------------------------------------------------------------------------------------------|
| Width | 35 mm |
| Nominal width of Laval nozzle | 3 mm |
| Muffler construction type | Open |
| Actuation type | Electrical |
| Reverse polarity protection | for all electrical connections |
| Mounting position | Any |
| Ejector characteristics | High vacuum Standard |
| Manual override | Detenting Non-detenting Covered |
| Integrated function | Flow control Shut off valve, electric Air saving function, electrical Power ejector pulse valve, electric Non-return valve Pneumatic muffler open Vacuum switch |
| Measured variable | Relative pressure |
| Measuring principle | Piezoresistive |
| Switching function | Window comparator Threshold value comparator |
| Valve function | 5/3, pressurized |
| Display type | LED LED display 2-digit |
| Displayable unit(s) | kPa |
| Setting range threshold value | 0 kPa...99 kPa |
| Setting range hysteresis | 0 kPa...90 kPa |
| Setting options | Teach-in Via parameter sets |
| Signal status display | LED |

| Feature | Value |
|-----------------------------------------------|-----------------------------------------------|
| Sensor switching status indication | LED |
| Operating pressure for max. suction rate | 6 bar |
| Operating pressure | 4 bar...8 bar |
| Operating pressure for max. vacuum | 6 bar |
| Max. vacuum | 92 kPa |
| Nominal operating pressure | 6 bar |
| Pilot pressure | 4 bar...10 bar |
| Max. suction rate with respect to atmosphere | 167 l/min |
| Air supply time at nominal operating pressure | 0.25 s |
| DC operating voltage range | 21.6 V...30 V |
| Idle current | 30 mA |
| Duty cycle | 100% |
| Certification | RCM compliance mark |
| CE marking (see declaration of conformity) | As per EU EMC directive |
| Operating medium | Compressed air as per ISO 8573-1:2010 [7:4:4] |
| Information on operating and pilot media | Operation with oil lubrication not possible |
| Corrosion resistance class (CRC) | 0 - No corrosion stress |
| LABS (PWIS) conformity | VDMA24364-B1/B2-L |
| Temperature of medium | -5 °C...50 °C |
| Noise level at nominal operating pressure | 75 dB(A) |
| Degree of protection | IP65 |
| Protection class | III |
| Ambient temperature | -5 °C...50 °C |
| Product weight | 970 g |
| Pressure measuring range | -1 bar...0 bar |
| Display range start value | 0 kPa |
| Display range end value | 99 kPa |
| Accuracy in ± % FS | 3 %FS |
| Reproducibility, switching value FS | 1 % |
| Electrical actuation | Fieldbus |
| Electrical connection | Via CPX |
| Pneumatic connection 3 | Pneumatic muffler open |
| Vacuum connection | G3/8 |
| Note on materials | RoHS-compliant |
| Seals material | HNBR NBR |
| Female nozzle material | POM |
| Housing material | Wrought aluminum alloy |
| Plate material | Die-cast aluminum |
| Material of adjusting screw | High-alloy stainless steel |
| Muffler material | POM PU foam |
| Material of screws | Steel |
| Material of jet nozzle | Wrought aluminum alloy |