

Indicator insert MCL, MCLZ, MFL, MFLZ

FESTO



Type code

| 001 | Series |
|----------|------------------|
| M | Indicator insert |

| 002 | Electrical connection |
|----------|--|
| C | Type A, plug, to DIN EN 175301-803 |
| F | Type B, as per industry standard (11 mm) |

| 003 | Function |
|----------|------------------|
| L | Indicator insert |

| 004 | Additional function |
|----------|---------------------|
| | None |
| Z | Protective circuit |

| 005 | Operating voltage |
|----------------|------------------------------------|
| | 24 V DC/AC with protective circuit |
| 24DC/AC | 24 V DC/AC |
| 230AC | 230 V AC |

Datasheet

General technical data

| | |
|-----------------------|---|
| Electrical connection | Type A, Type B, Plugs, To DIN EN 175301-803, To industry standard (11 mm) |
|-----------------------|---|

Technical data – Electrical

| | | |
|----------------------------------|-------------|--------------|
| Nominal operating voltage AC | 24 V | 230 V |
| Nominal operating voltage DC | 24 V | – |
| Permissible voltage fluctuations | +/- 15% | -20% / +15% |
| Mains frequency | 0 ... 60 Hz | 50 ... 60 Hz |

Materials

| | |
|------------------------|----------------|
| Material housing | PA6 reinforced |
| LABS (PWIS) conformity | VDMA24364-B2-L |

Operating and environmental conditions

| | | |
|--|--------------------|--|
| Nominal operating voltage AC | 24 V | 230 V |
| Ambient temperature | -20 ... 60°C | |
| CE mark (see declaration of conformity) ¹⁾ | – | To EU Low Voltage Directive |
| CE marking (see declaration of conformity) ²⁾ | – | To UK regulations for electrical equipment |
| Degree of protection | IP65, To IEC 60529 | |

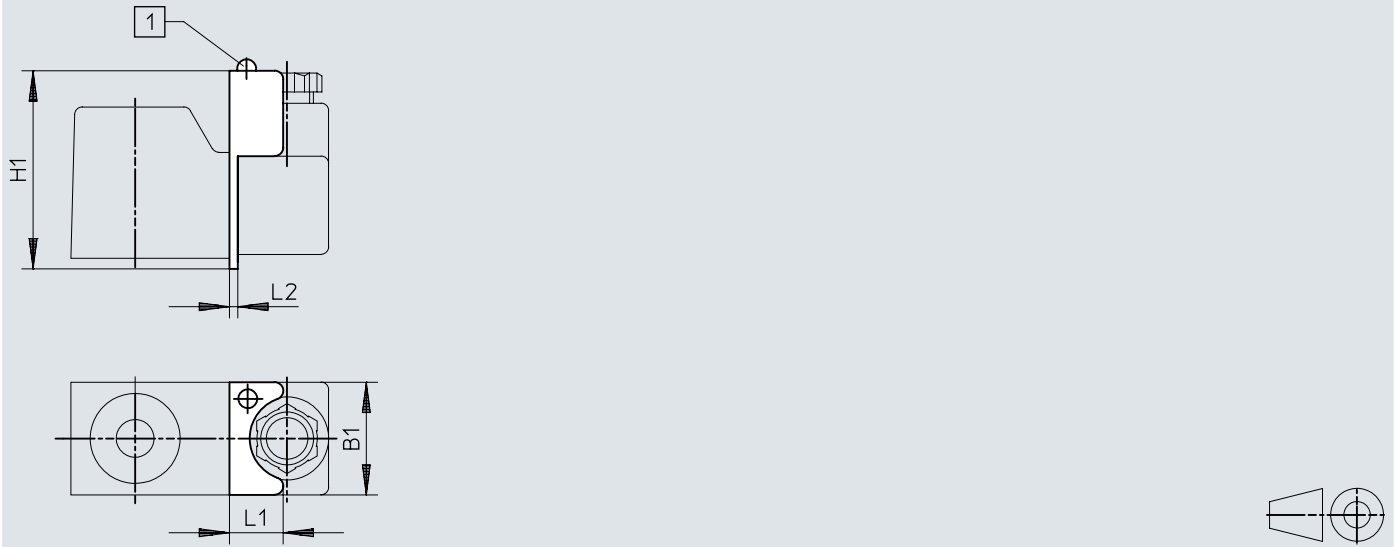
1) More information www.festo.com/catalogue/... Support/Downloads.

2) More information www.festo.com/catalogue/... Support/Downloads.

Dimensions

Dimensions – Electrical connection type A

Download CAD data → www.festo.com

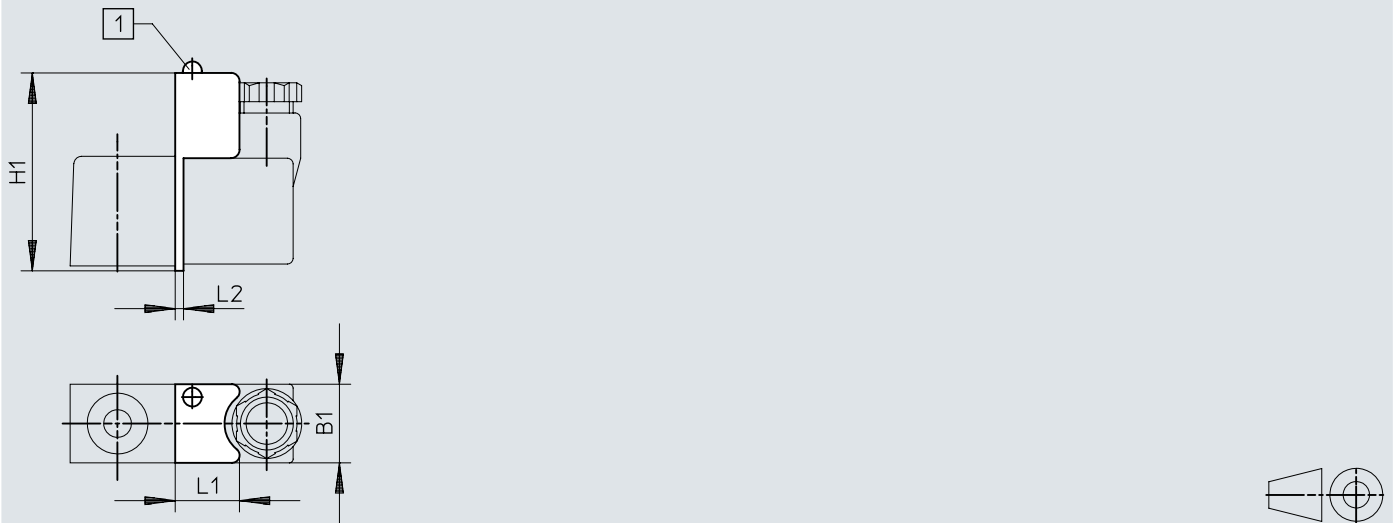


[1] LED

| | B1 | H1 | L1 | L2 |
|-------------|------|------|------|-----|
| MCL-24DC/AC | 29,8 | 52,7 | 14,2 | 2,2 |
| MCL | 29,8 | 52,7 | 14,2 | 2,2 |
| MCL-230AC | 29,8 | 52,7 | 14,2 | 2,2 |

Dimensions


Dimensions – Electrical connection type B

Download CAD data → www.festo.com

[1] LED

| | B1 | H1 | L1 | L2 |
|--------------|------|------|----|-----|
| MFL-24DC/AC | 20,8 | 51,4 | 17 | 1,7 |
| MFLZ-24DC/AC | 20,8 | 51,4 | 17 | 1,7 |
| MFL-230AC | 20,8 | 51,4 | 17 | 1,7 |

Ordering data

| Ordering data | | | | | |
|--|--------------------------------------|------------------------------|----------------|--------------------|---------------------|
| | Electrical connection | Nominal operating voltage AC | Product weight | Part no. | Type |
|  | Type A, Plugs, To DIN EN 175301-803 | 24 V | 12 g | 10000 | MCL-24DC/AC |
| | Type B, To industry standard (11 mm) | | 14 g | 12610 | MFLZ-24DC/AC |
| | | 15 g | 10004 | MFL-24DC/AC | |
| | Type A, Plugs, To DIN EN 175301-803 | 230 V | 14 g | 10005 | MFL-230AC |
| | | 24 V | 13 g | 12611 | MCL |
| | | 230 V | 12 g | 10001 | MCL-230AC |