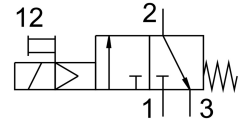


# Shut off valve HEE-3/4-D-MIDI-24-NPT

Part number: 173910

FESTO



## Data sheet

Feature	Value
Width dimension	55 mm
Structural design	Piston gate valve
Actuation type	Electrical
Sealing principle	Soft
Exhaust air function	Without flow control option
Manual override	Detenting
Reset method	Mechanical spring
Type of control	Pilot-controlled
Valve function	3/2, closed, monostable
Operating pressure	2.5 bar...16 bar
C value	17.3 l/sbar
b-value	0.41
Standard nominal flow rate	3800 l/min
Duty cycle	100%
Coil characteristics	24 V DC: 3.0 W
Permissible voltage fluctuations	+/- 10 %
Operating medium	Compressed air as per ISO 8573-1:2010 [7:4:4] Inert gas
Information on operating and pilot media	Operation with oil lubrication possible (required for further use)
Corrosion resistance class (CRC)	2 - Moderate corrosion stress
Note on materials	RoHS-compliant
LABS (PWIS) conformity	VDMA24364-B1/B2-L
Temperature of medium	-10 °C...60 °C
Ambient temperature	-10 °C...60 °C
Type of mounting	Line installation With accessories
Mounting position	Any
Flow direction	Non-reversible
Product weight	500 g
Pneumatic connection 1	3/4 NPT
Pneumatic connection 2	3/4 NPT
Pneumatic connection 3	G1/4

<b>Feature</b>	<b>Value</b>
Air quality class at the output	Compressed air as per ISO 8573-1:2010 [7:4:4] Inert gas
Pilot air supply port	Internal
Electrical connection	Form C Plug as per DIN EN 175301-803
Signal status display	With accessories
Seals material	NBR
Housing material	Die-cast aluminum