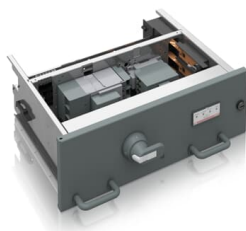




PRODUCT-DETAILS

MStart

Withdrawable Motor Starter for MNSiS



General Information

Extended Product Type	MStart
Product ID	1TGE206132N5250
ABB Type Designation	-
Catalog Description	Withdrawable Motor Starter for MNSiS
Long Description	Withdrawable Motor Starter for MNSiS (8E, Circuit Breaker), Rated Voltage [V]= 500, Short-Circuit Current [kA]= 50, Rated Power [kW]= 90, Rated Current[A]= 128

Technical

Product Type	Undefined
Frame Size	Undefined

Certificates and Declarations

Declaration of Conformity - CE	1TGE097001
--------------------------------	------------

Popular Downloads

Data Sheet, Technical Information

1TGC910001B0204
1TGC910809M0202

Classifications

WEEE Category

Product Not in WEEE Scope

Additional Information

Product Main Type

DOL (3-pole, heavy duty)

Categories

[Low Voltage Products and Systems](#) → [Low Voltage Systems](#) → [IEC - Low Voltage Motor Control Centers](#) → [MNS iS](#)

[Low Voltage Products and Systems](#) → [Low Voltage Systems](#) → [IEC - Low Voltage Motor Control Centers](#) → [MNS iS](#)

[Low Voltage Products and Systems](#) → [Service](#) → [Spares and Consumables](#) → [Parts](#)

