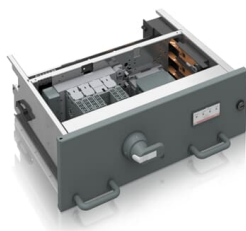




PRODUCT-DETAILS

MStart

Withdrawable Motor Starter for MNSiS



General Information

Extended Product Type	MStart
Product ID	1TGE107542F4100
ABB Type Designation	-
Catalog Description	Withdrawable Motor Starter for MNSiS
Long Description	Withdrawable Motor Starter for MNSiS (8E, Fused), Rated Voltage [V]= 400, Short-Circuit Current [kA]= 80, Rated Power [kW]= 30, Rated Current[A]= 55

Technical

Product Type	Undefined
Frame Size	Undefined

Certificates and Declarations

Declaration of Conformity - CE	1TGE097001
--------------------------------	------------

Popular Downloads

Data Sheet, Technical Information

1TGC910001B0204
1TGC910809M0202

Classifications

WEEE Category

Product Not in WEEE Scope

Additional Information

Product Main Type

Star/Delta

Categories

Low Voltage Products and Systems → Low Voltage Systems → IEC - Low Voltage Motor Control Centers → MNS iS
Low Voltage Products and Systems → Service → Spares and Consumables → Parts

