

SPECIFICATIONS

Mechanical

RJ45: Mating Force: 4.5 Pounds max.
Unmating Force: 4.5 Pounds max.
Durability: 1000 Cycles
USB: Mating Force: 3.5 Kgf MAX.
Unmating Force: 1.0 Kgf MIN.
Durability: 1500 Cycles

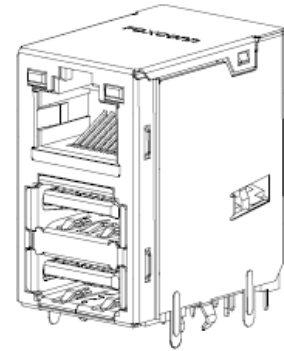
Electrical

RJ45: Current Rating: 0.5A max.
USB: Current Rating: 3A FOR V-BUS AND GND PIN.
 0.25A MIN. FOR ALL OTHER CONTACTS.

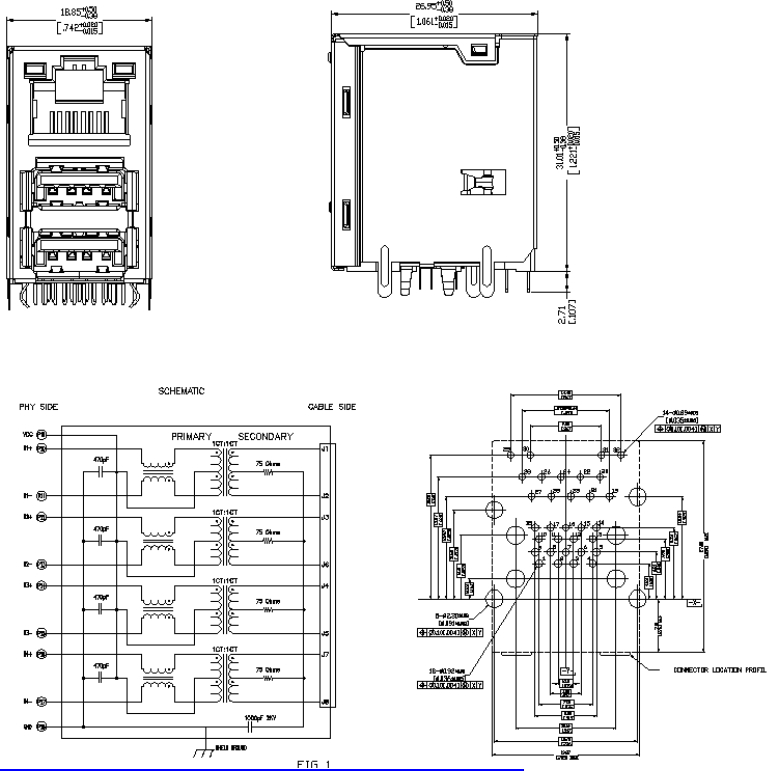
Physical

Housing: Thermoplastic, UL94V-0 rated in BLACK Color
Contact: Copper Alloy
Shell: SUS304
Operating Temperature: -30°C to +85°C

JFM Series
RJ45+USB3.1
T/H Type
1.27mm [.040"] Pitch,
1 Gigabit Base-T



DRAWING



ORDERING INFORMATION

REMARK:

JFM 3 8 U 1 * - B A S 1 - 4 *

RJ WITH MAGNETIC CORE COUNT: 8=8 CORE PCB ATTACH METHOD: 1=SOLDER TAIL LED: (SEE SHEET 3/5) EXTENSION NO. PACKAGING: 4: SOFT TRAY MATERIAL: H: HALOGEN FREE, F: LEAD FREE

PROTOCOL TYPE: 3=10/100/1000 BASE T CONFIGURATION: U=COMBO USB

JFM38U1B-BAS1-4*	GREEN 29	ORANGE 30	YELLOW 31	32
PART NO.	LED1	LED2		